

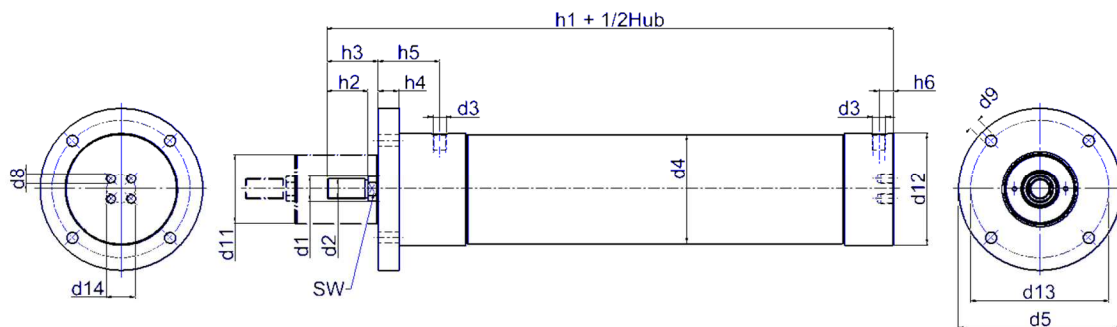
SERIES 81
Telescopic cylinder
2-level, double effect



Technical characteristics	
Design type	Telescopic cylinder
Function	2-level, double effect
Piston diameter in mm	20/32, 25/40, 30/50, 40/63, 50/80, 63/100
Stroke length in mm	Stroke lengths freely selectable, max. 1,000
Pneumatic connection	G1/8, G1/4
Installation position	- Any - Installation without lateral force
Speed regulation	Possible using exhaust air throttling
Temperature range	-20°C to +80°C
Materials	- Piston rod from stainless steel - Telescopic pipe from aluminium, hard-anodised - Cylinder pipe from aluminium, hard-anodised - Front and end pieces from aluminium, anodised
Seals	- Perbunan
Damping	End position damping by Vulkollan rings
Other	- Customer-specific solutions upon request - Seal kits upon request
Pneumatic parameters	
Medium	Compressed air quality: 2.2.1 compliant with ISO 8573-1 (2=particle / 2=dew point / 1=oil concentration)
Operating pressure in bar	2 to 8

Mounting 57

Front flange mounting

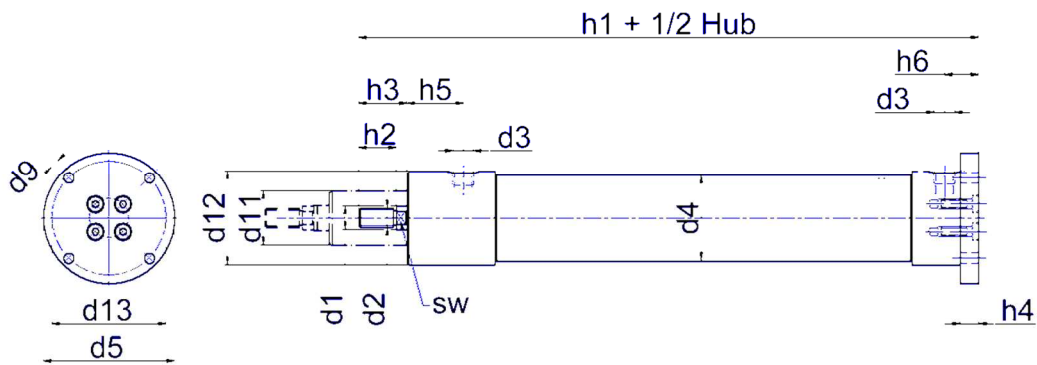


Piston Ø	Theo. compressive force at 6 bar in N	Theo. tensile force at 6 bar in N	d1 Ø	d2	d3	d4 Ø	d5 Ø	d8	d9 Ø	d11 Ø	d12 Ø	d13 Ø	d14 Ø
20/32	165	125	10	M8	G1/8	38	69	M5	5.5	25	45	56	20
25/40	260	200	12	M10	G1/8	45	74	M6	6.6	30	50	63	20
30/50	370	270	16	M12	G1/4	55	84	M6	6.6	35	60	73	25
40/63	660	500	20	M16x1.5	G1/4	68	109	M6	6.6	45	74	87	25
50/80	1040	870	20	M16x1.5	G1/4	86	129	M8	9	55	91	107	35
63/100	1650	1400	25	M20x1.5	G1/4	107	159	M10	11	68	110	135	28

Piston Ø	h1	h2	h3	h4	h5	h6	SW
20/32	107	16	23	10	22	11	8
25/40	121.5	20	27	12	34	11	10
30/50	139	24	31	12	36	14	13
40/63	170	32	41	12	46	14	17
50/80	180.5	32	41	12	51	15	17
63/100	203	40	50	20	60	14	21

Mounting 56

Rear flange mounting



Piston Ø	Theo. compressive force at 6 bar in N	Theo. tensile force at 6 bar in N	d1 Ø	d2	d3	d4 Ø	d5 Ø	d9 Ø	d11 Ø	d12 Ø	d13 Ø
20/32	165	125	10	M8	G1/8	38	69	5.5	25	45	56
25/40	260	200	12	M10	G1/8	45	74	6.6	30	50	63
30/50	370	270	16	M12	G1/4	55	84	6.6	35	60	73
40/63	660	500	20	M16x1.5	G1/4	68	109	6.6	45	74	87
50/80	1040	870	20	M16x1.5	G1/4	86	129	9	55	91	107
63/100	1650	1400	25	M20x1.5	G1/4	107	159	11	68	110	135

Piston Ø	h1	h2	h3	h4	h5	h6	SW
20/32	114	16	23	10	22	18	8
25/40	130.5	20	27	12	34	20	10
30/50	147	24	31	12	36	22	13
40/63	178	32	41	12	46	22	17
50/80	190.5	32	41	14	51	25	17
63/100	219	40	50	20	60	30	21